



HT BioImaging

HEAT DIFFUSION IMAGING TECHNOLOGY FOR PET CANCER DETECTION AND CLASSIFICATION
www.htbioimaging.com

HT BioImaging Pet System

Real-Time, Non-Invasive, Non-Radiant and Highly Accurate Medical Imaging System for Cancer detection and classification

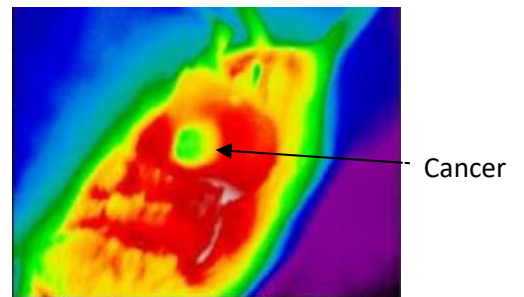
●Principle

The heat diffusion phenomenon of Cancer cells is different than its healthy cells.

HTBioImaging is the first company succeeded in rendering by analyzing the heat diffusion characteristics of a tissue, provides a new functional layer of high-resolution information in real-time.

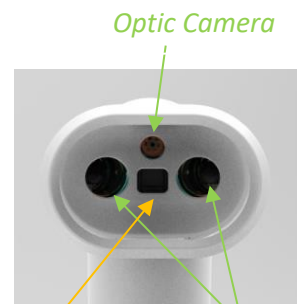
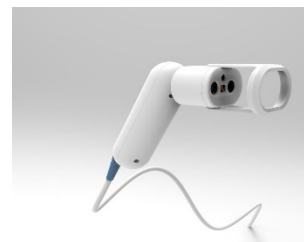
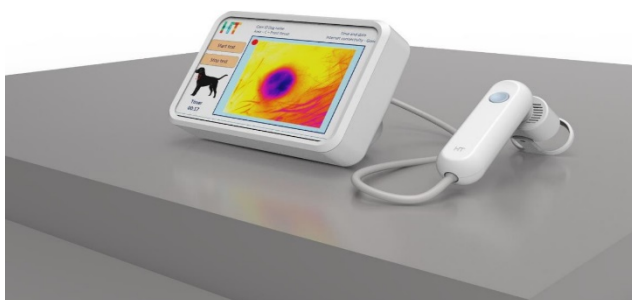
●Diagnosis Competence

Scanned lesions are assigned with a **Cancerous Probability** (0-100%) and **Lesion Classification** (ex; Lymph nodes cancer, Must cell tumor, Adenoma, etc.) in less than 1 minute.



Mice Pre-Clinical Trials

●System Outline

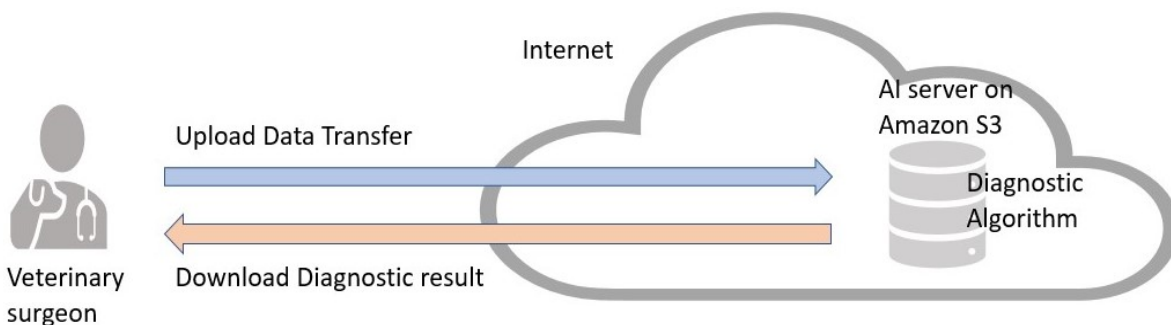


Thermal sensor Heat Sources

The Data captured by the Handheld Probe and transferred to the Control Unit is uploaded to HTBioImaging AI server on Amazon S3 cloud for real-time analysis.

Dedicated Machine Learning algorithm compares new case with existing database.

Results are transmitted back to the Control Unit and presented to the user in few seconds.



●Contact

Business development representative at Japan
CP&C Japan Partners
Shinichi Komatsu komatsu@cpcjp.co.jp